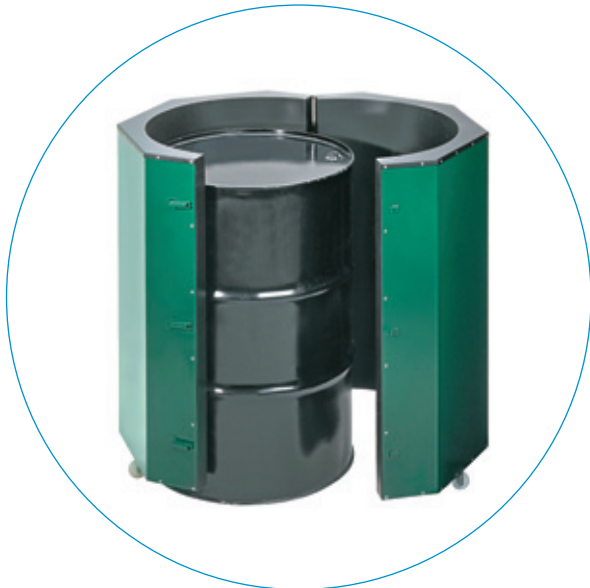


CF/JL Jacket drum heaters



Characteristics

- Two hinged parts.
- Rollers for easy fitting.
- Heating uniformly divided up between the two halves.
- Fully insulated lid.
- Steel casing and lid.
- Power 4.65 kW.
- 400 V 3-phase.



Applications

CF/JL drum heaters are ideal for heating materials such as bitumen, tar, grease, paint, varnish and wax. A thermostat allows the temperature to be adjusted to prevent overheating the contents.



Control

A thermostat that can be set between + 50 and + 300°C controls the temperature of the inner wall of the heater and does not necessarily reflect the temperature inside the drum.

Heating time is variable. It depends on the type of substance being heated, the ambient temperature and the temperature to be obtained.

For substances that could be damaged by too high a temperature it is recommended to proceed in stages, progressively increasing the thermostat setting.

Connection and fitting

The drum heater has a power rating of 4.65 kW at 400 V and must be connected to a three-phase power supply. It is made up of two parts and is provided with rollers to make it easy to fit around the drum.

To use it, simply place it round the drum, close it with the clips and fit the lid. When the thermostat is set to the required temperature, connect it up to the mains. The CF/JL is then ready to use. If rapid heating is required, a CF/B type drum heater can be added under the drum.

Use

Consult the pages of the catalogue devoted to the corresponding general operating principles, general instructions for use and accessories.

	CF/JL
Heating element	Shielded resistors
Height with lid	1080 mm
Diameter with thermostat box	870 mm
Power	4650 W
Voltage	400 V 3-phase
Insulation	50 mm rock wool
Thermostat	from + 50°C to + 300°C
Weight	72 kg

FLEXELEC S.A.S

10, rue des frères Lumière
 Z.A. du Bois Rond
 69720 ST BONNET DE MURE - FRANCE
 Tel: + 33 (0)4.72.48.30.90
 Fax: + 33 (0)4.78.40.82.81
 E-mail: flexelec@omerin.com

FLEXELEC Dept

OMERIN ASIA Pte Ltd
 51 Goldhill Plaza #08-12/01
 SINGAPORE 308900
 Tel: + 65.6255.4778
 Fax: + 65.6255.4779
 E-mail: sales@omerin.com.sg

FLEXELEC (UK) Ltd

Unit 11 Kings Park Industrial Estate
 Primrose Hill - KINGS LANGLEY
 Hertfordshire - WD4 8ST - UK
 Tel: + 44 (0) 1923.274477
 Fax: + 44 (0) 1923.270264
 E-mail: sales@omerin.co.uk

FLEXELEC Dept

OMERIN GmbH
 Tennweg 2 B
 D-65510 IDSTEIN - GERMANY
 Tel: + 49 (0) 6126.94.31-0
 Fax: + 49 (0) 6126.83.99
 E-mail: omeringmbh@omerin.com